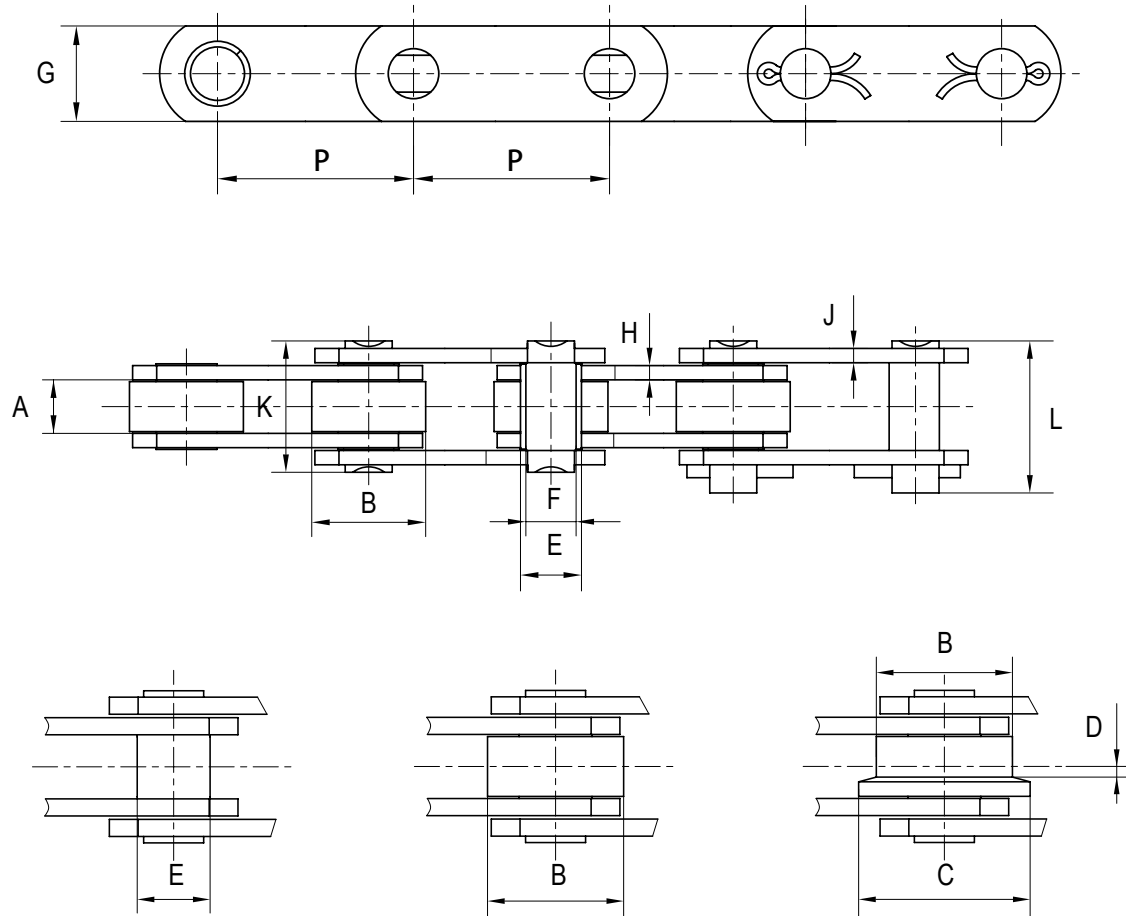


# CONVEYOR CHAIN (Solid Pin)

British Standard.



Load	Pitch	Pitch	Width between inner plates	Roller Dimension			Bush Dia	Pin Dia	Plate depth	Plate Thickness		Pin Length		Breaking Load			Weight kg/m
				B	C	D				E	F	H	J	K	L	Min Lbs	
Lbf	P Inches	P mm	A mm	B mm	C mm	D mm	E mm	F mm	G mm	H mm	J mm	K mm	L mm				
7,500	2.0	50.8	15.0	31.75	40	2.5	17	14	25	4	4	37	40.5	33,000	40,000	50,000	4.0
	2.50	63.5	"	"	"	"	"	"	"	"	"	"	"	"	"	"	3.5
	3.00	76.2	"	"	"	"	"	"	"	"	"	"	"	"	"	"	3.2
	3.50	88.9	"	"	"	"	"	"	"	"	"	"	"	"	"	"	3.0
	4.00	101.6	"	"	"	"	"	"	"	"	"	"	"	"	"	"	2.8
	5.00	127.0	"	"	"	"	"	"	"	"	"	"	"	"	"	"	2.6
	6.00	152.4	"	"	"	"	"	"	"	"	"	"	"	"	"	"	2.4
15,000	3.0	76.2	19.0	47.5	60	3.5	23	19	40	5	4	45	50.5	67,000	100,000	130,000	7.7
	3.5	88.9	"	"	"	"	"	"	"	"	"	"	"	"	"	"	7.0
	4.0	101.6	"	"	"	"	"	"	"	"	"	"	"	"	"	"	6.5
	5.0	127.0	"	"	"	"	"	"	"	"	"	"	"	"	"	"	5.8
	6.0	152.4	"	"	"	"	"	"	"	"	"	"	"	"	"	"	5.3
	7.0	177.8	"	"	"	"	"	"	"	"	"	"	"	"	"	"	5.0
	8.0	203.2	"	"	"	"	"	"	"	"	"	"	"	"	"	"	4.7
30,000	4.0	101.6	26	66.7	82	3.5	33	26.9	50	7	5	58	63.5	134,000	156,000	200,000	14.3
	5.0	127.0	"	"	"	"	"	"	"	"	"	"	"	"	"	"	12.5
	6.0	152.4	"	"	"	"	"	"	"	"	"	"	"	"	"	"	11.3
	7.0	177.8	"	"	"	"	"	"	"	"	"	"	"	"	"	"	10.5
	8.0	203.2	"	"	"	"	"	"	"	"	"	"	"	"	"	"	9.8
	9.0	228.6	"	"	"	"	"	"	"	"	"	"	"	"	"	"	9.3
	10.0	254.0	"	"	"	"	"	"	"	"	"	"	"	"	"	"	9.0
45,000	6.0	152.4	38	88.9	114	8.5	38	28	60	10	8	83	88.5	200,000	300,000	340,000	24.3
	7.0	177.8	"	"	"	"	"	"	"	"	"	"	"	"	"	"	22.0
	8.0	203.2	"	"	"	"	"	"	"	"	"	"	"	"	"	"	21.0
	10.0	254	"	"	"	"	"	"	"	"	"	"	"	"	"	"	18.0
	12.0	304.8	"	"	"	"	"	"	"	"	"	"	"	"	"	"	16.5
60,000	6.0	152.4	38	89	114	9	38	62	60	10	8	84	94	267,000	300,000	380,000	24.0
	7.0	177.8	"	"	"	"	"	"	"	"	"	"	"	"	"	"	21.8
	8.0	203.2	"	"	"	"	"	"	"	"	"	"	"	"	"	"	20.0
	10.0	254	"	"	"	"	"	"	"	"	"	"	"	"	"	"	17.7
	12.0	304.8	"	"	"	"	"	"	"	"	"	"	"	"	"	"	16.0

# Maximum breaking load after hardened.

Sprockets Australia has made every attempt to ensure data above is accurate however accepts no liability for inaccuracies or damage caused.